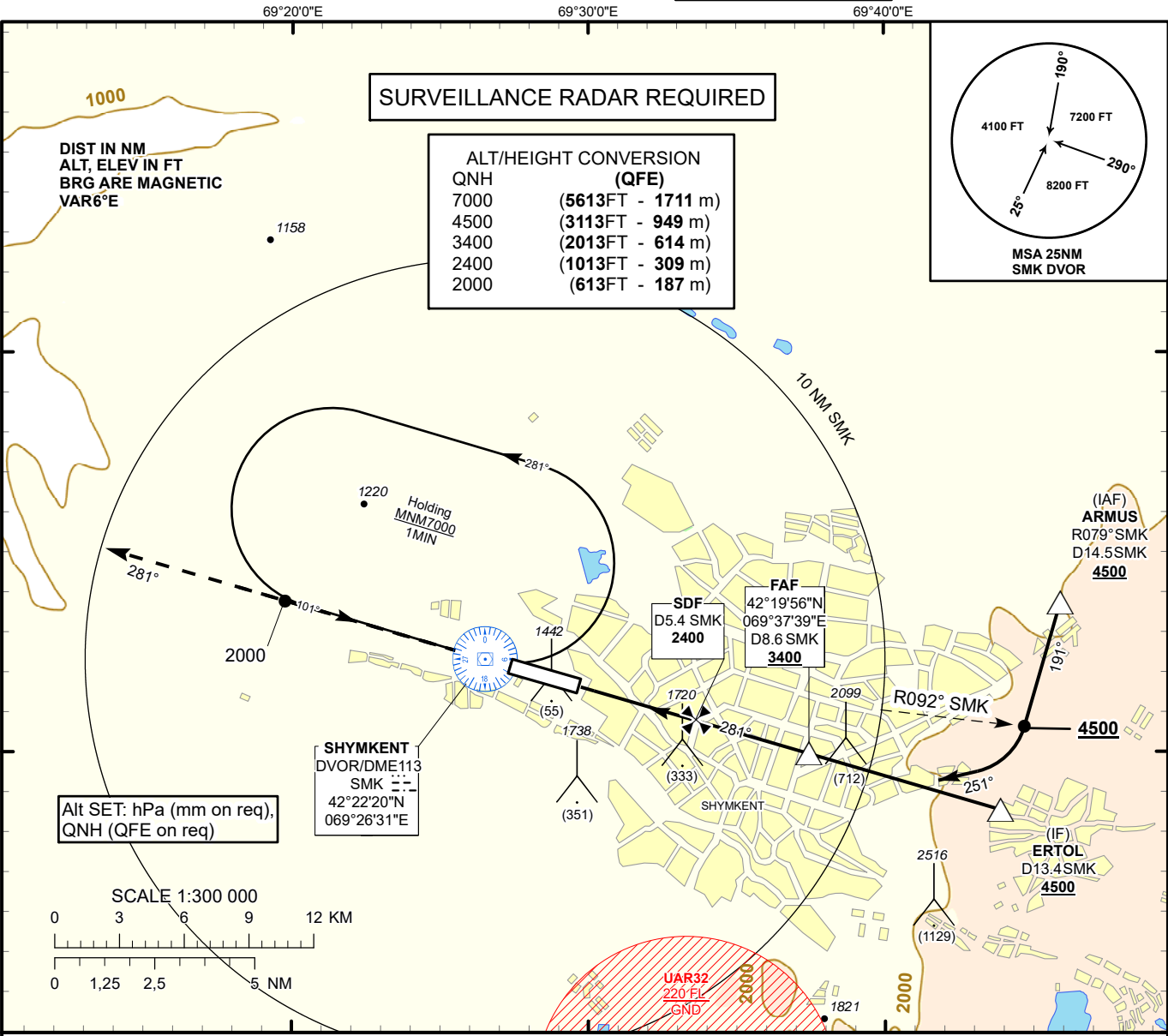


INSTRUMENT
APPROACH
CHART - ICAO

AERODROME ELEV 1387 FT
HEIGHTS RELATED TO
AD ELEV

SHYMKENT TOWER 125.9
SHYMKENT ATIS (EN) 119.2
SHYMKENT ATIS (RU) 126.6

SHYMKENT
VOR/DME Y
RWY 28

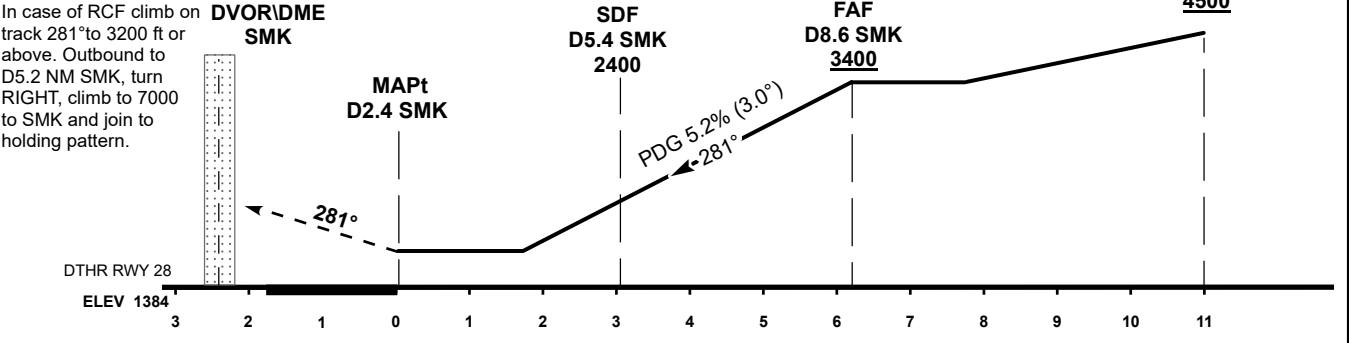


MISSED APPROACH

Climb on track 281° to 4500ft.
After passing 2000 ft radar
vectoring will be provided.

RADIO FAILURE

In case of RCF climb on
track 281° to 3200 ft or
above. Outbound to
D5.2 NM SMK, turn
RIGHT, climb to 7000
to SMK and join to
holding pattern.



Aircraft Category		A	B	C	D	DIST to DTHR	NM	1.0	2.0	3.0	4.0	5.0	6.2
Straight-in Approach OCA/H						DME SMK	NM	3.4	4.4	5.4	6.4	7.4	8.6
	VOR/DME SDF	1970(590)	1970(590)	1970(590)	1970(590)	ALTITUDE	FT	1754	2073	2391	2710	3028	3400
	VOR/DME WO SDF	2370(980)	2370(980)	2370(980)	2370(980)	HEIGHT	FT	(367)	(686)	(1004)	(1323)	(1641)	(2013)
Aerodrome Operating Minima MDH ft x RVR (CMV)	VOR/DME					GS	Kt	80	100	120	140	160	180
						Desc.Rate(5.2%)	ft/min	420	530	630	740	840	950
						FAF-MAPt(6.2NM)	min:sec	4:39	3:43	3:06	2:39	2:20	2:04

CHANGE: ERTOL, FAF ALT, editorial.

SHYMKENT
VOR/DME Y

AERONAUTICAL DATA TABULATION

VOR approach to RWY28 from ARMUS, ERTOL	
Fix/point	Coordinates
(SDF) D5.4 SMK	42° 20' 49.2"N 069° 33' 32.7"E
(FAF) D8.6 SMK	42° 19' 55.9"N 069° 37' 38.6"E
ERTOL (IF) D13.4 SMK	42° 18' 33.5"N 069° 43' 53.6"E
ARMUS (IAF) R079°, D14.5 SMK	42° 23' 44.6"N 069° 45' 55.9"E
SMK DVOR/DME	42° 22' 20.4"N 069° 26' 30.6"E
DTHR RWY 28	42° 21' 40.62"N 069° 29' 34.86"E
Final approach descent angle is 3°	